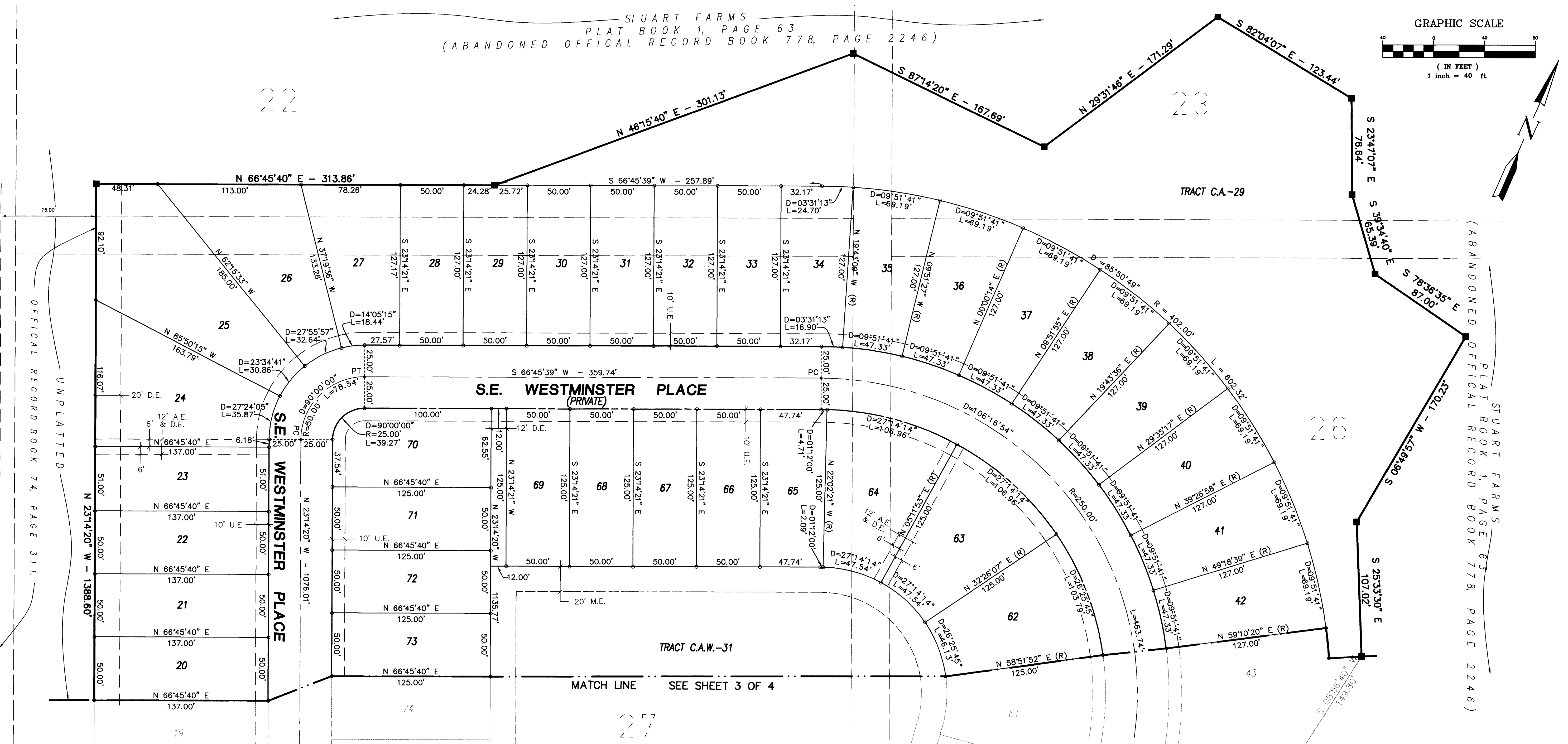


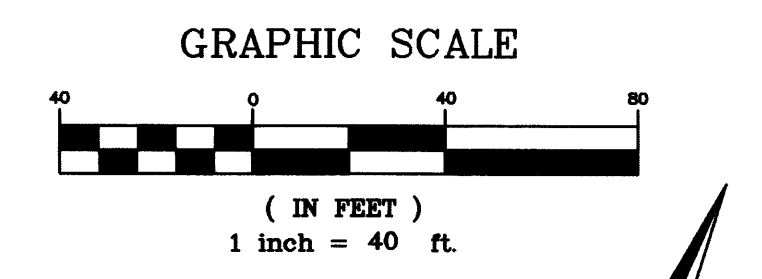
WILLOUGHBY PLAT NO. 16, A P.U.D.(r) (WILLOUGHBY GLEN)

Being a part of an abandoned portion of Stuart Farms
as recorded in Plat Book 1, Page 63, public records,
Martin County, Florida,

CLERK'S RECORDING CERTIFICATE
I, MARSHA STILLER, CLERK OF THE CIRCUIT COURT OF MARTIN COUNTY, FLORIDA, HEREBY CERTIFY THAT THIS PLAT WAS FILED FOR RECORD IN
PLAT BOOK 17, PAGE 84
MARTIN COUNTY, FLORIDA, PUBLIC RECORDS THIS
8 DAY OF October, 1999.
MARSHA STILLER, CLERK OF THE CIRCUIT COURT MARTIN COUNTY, FLORIDA.
FILE NUMBER 1405143 BY [Signature]
DEPUTY CLERK



SUBDIVISION PARCEL CONTROL NUMBER



OFFICIAL RECORD BOOK 74, PAGE 311.

STUART FARMS PLAT BOOK 1, PAGE 63, PUBLIC RECORDS, MARTIN COUNTY, FLORIDA, PLAT BOOK 778, PAGE 2246

LEGEND	
•	= SET PERMANENT CONTROL POINT (PCP) PARKER KALON NAIL & WASHER LABELED "GCY LB 4108"
○	= SET 3/4" IRON PIPE WITH YELLOW CAP LABELED "GCY, INC. LB 4108"
■	= SET PERMANENT REFERENCE MONUMENT (PRM) 4"x4" CONCRETE MONUMENT WITH DISK LABELED "GCY INC. P.R.M. LB 4108, PSM 4864"
D	= DELTA (CENTRAL ANGLE)
L	= ARC LENGTH
R	= RADIUS
CB	= CHORD BEARING
A.E.	= ACCESS EASEMENT (PRIVATE)
C.A.	= COMMON AREA
C.A.W.	= COMMON AREA WATER
D.E.	= DRAINAGE EASEMENT (PRIVATE)
LB	= LICENSED BUSINESS
M.E.	= MAINTENANCE EASEMENT
P.C.	= POINT OF CURVATURE
P.R.C.	= POINT OF REVERSE CURVATURE
PSM	= PROFESSIONAL SURVEYOR AND MAPPER
P.T.	= POINT OF TANGENCY
P.U.D.	= PLANNED UNIT DEVELOPMENT
(R)	= RADIAL LINE
U.E.	= UTILITY EASEMENT

- SURVEYOR'S NOTES**
- THIS PLAT, AS RECORDED IN ITS ORIGINAL FORM IN THE PUBLIC RECORDS, IS THE OFFICIAL DEPICTION OF THE SUBDIVIDED LANDS DESCRIBED HEREON AND WILL IN NO CIRCUMSTANCES BE SUPPLANTED IN AUTHORITY BY ANY OTHER FORM OF THE PLAT, WHETHER GRAPHIC OR DIGITAL.
 - THERE MAY BE ADDITIONAL RESTRICTIONS THAT ARE NOT RECORDED ON THIS PLAT THAT MAY BE FOUND IN THE PUBLIC RECORDS OF THIS COUNTY.
 - THERE SHALL BE NO BUILDING OR ANY OTHER KIND OF CONSTRUCTION, OR PLACEMENT OF TREES OR SHRUBS ON DRAINAGE EASEMENTS.
 - BEARINGS SHOWN HEREON ARE REFERENCED TO THE NORTH LINE OF FISHERMAN'S COVE SECTION 2, PHASE 2A, AS RECORDED IN PLAT BOOK 8, PAGE 20, PUBLIC RECORDS, MARTIN COUNTY, FLORIDA. SAID LINE BEARS SOUTH 66°36'26" WEST.

Job Number 99-1019-01-01
Licensed Business #4108

GCY
INCORPORATED
PROFESSIONAL SURVEYORS AND MAPPERS

1505 S.W. MARTIN HIGHWAY P.O. BOX 1469
PALM CITY, FLORIDA 34991 (561-286-8083)

CERTIFICATE OF AUTHORIZATION LB 4108